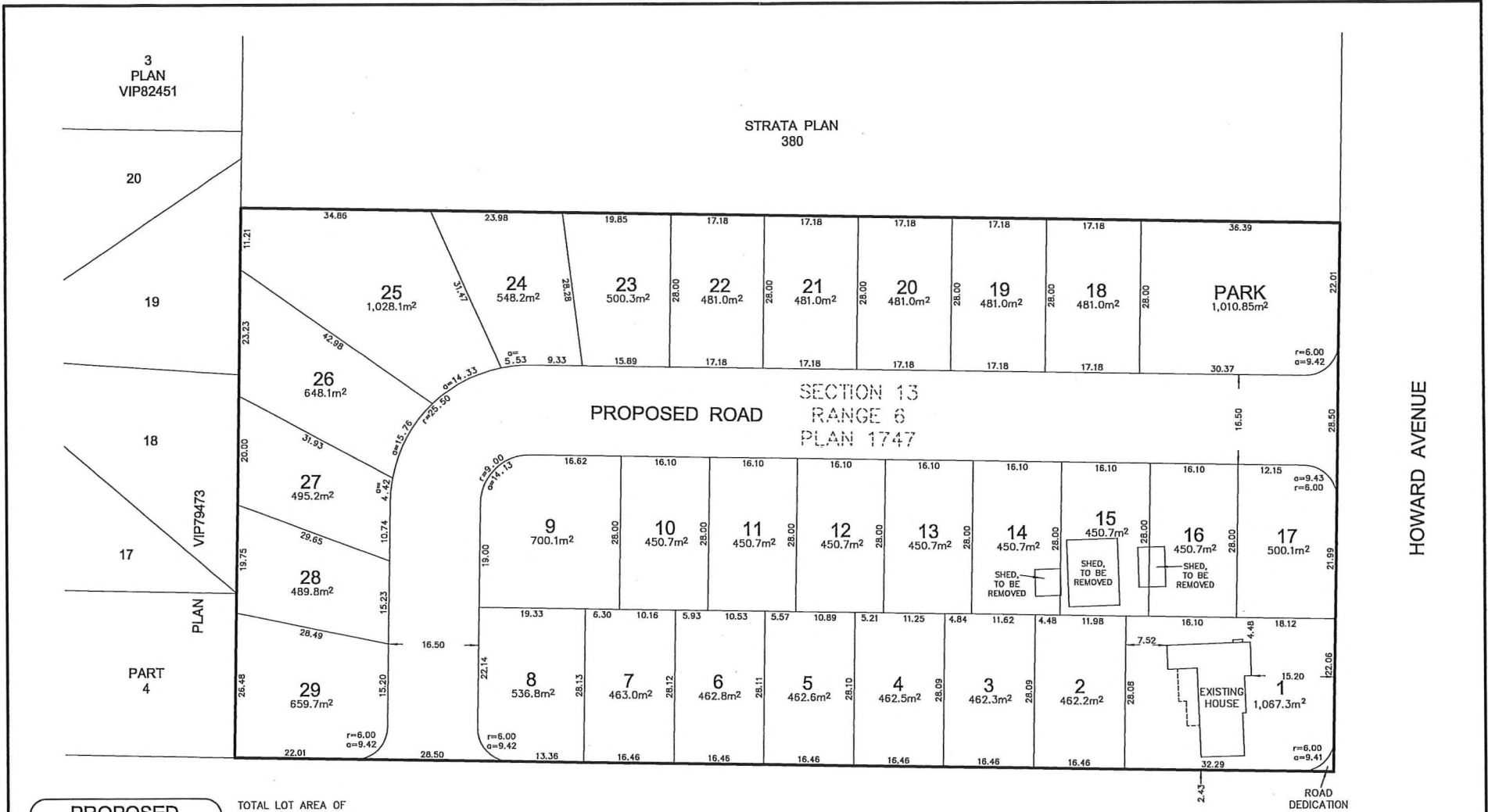


# SCHEDULE "A"

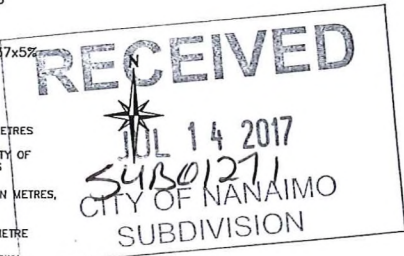


**PROPOSED SUBDIVISION**  
**SAYWELL DEVELOPMENTS**  
 SECTION 13, RANGE 6,  
 SECTION 1, NANAIMO  
 DISTRICT, PLAN 1747  
 ADDRESS : 897 HOWARD AVE., NANAIMO  
 PROJECT SURVEYOR : D.W. HOLME  
 DRAWN BY : DAW DATE : MAY 17/17  
 OUR FILE : 88652 REVISION :

**JEA J.E. ANDERSON & ASSOCIATES**  
 SURVEYORS - ENGINEERS  
 1A-3411 SHENTON ROAD, NANAIMO, B.C. V9T 2H1  
 TEL: 250-759-4931 FAX: 250-759-4990  
 EMAIL: nanaimo@jeaanderson.com  
 NANAIMO-VICTORIA-PARKSVILLE

TOTAL LOT AREA OF SECTION 13, RANGE 6 = 20,216.37m<sup>2</sup>  
 PARK DEDICATION REQUIRED = 20,216.37x5% = 1,010.82m<sup>2</sup>

**LEGEND**  
 ALL DIMENSIONS ARE IN METRES  
 CONTOURS SHOWN ARE CITY OF NANAIMO UDAR CONTOURS  
 DATUM FOR ELEVATIONS, IN METRES, IS GEODETIC  
 CONTOUR INTERVAL = 1 METRE  
 SUBJECT TO CHARGES SHOWN ON TITLE NO. CA2853825 (P.I.D. 007-035-896)  
 DIMENSIONS ARE DERIVED FROM LAND TITLE OFFICE RECORDS  
 THIS PLAN HAS BEEN PREPARED IN ACCORDANCE WITH THE PROFESSIONAL REFERENCE MANUAL



EIGHTH STREET

**CITY OF NANAIMO  
 PRELIMINARY LAYOUT  
 ACCEPTANCE**

2017-NOV-14 *[Signature]*  
 Date Approved By  
2018-NOV-14  
 Expiry Date

